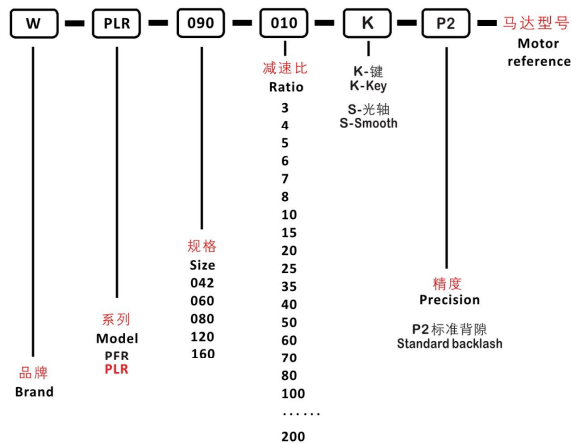




INDICATION FOR MODEL SELECTION

机种型号表示



GENERAL NOTICES

订货须知

- 机种、型号、扭矩
- 减速比或出力轴转速
- 工况及连接方式
- 数量及安装的机械名称
- 入力方式和入力转速
- 马达厂牌型号或法兰及马达轴尺寸
- Type, model and torque
- Ratio or output speed
- Working conditions and connection methods
- Quantity and installed machine name
- Input mode and input speed
- Motor brand model or flange and motor shaft size

PLANETARY GEARBOX

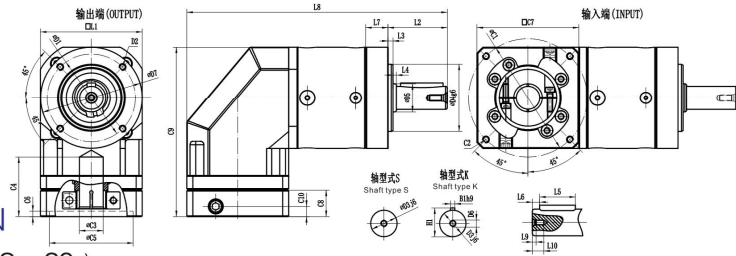
减速机性能资料/Performance

| 规格 Specification | 单位 Unit | 节数 Stage | 减速比 Ratio | WPLR042 | WPLR060 | WPLR080 | WPLR120 | WPLR160 |
|--|-----------|----------|-----------|-------------------------------------|---------|---------|---------|---------|
| 额定输出力矩 Rated output torque T_{2N} | Nm | 1 | 3 | 8 | 18 | 40 | 125 | 290 |
| | | | 4 | 18 | 36 | 90 | 230 | 460 |
| | | | 5 | 16 | 40 | 110 | 260 | 550 |
| | | | 6 | 8 | 20 | 40 | 90 | 340 |
| | | | 7 | 8 | 20 | 40 | 90 | 340 |
| | | | 8 | 5 | 36 | 90 | 230 | 460 |
| | | | 10 | 5 | 40 | 110 | 260 | 550 |
| | | | 12 | 8 | 20 | 40 | 90 | 340 |
| | | | 14 | 8 | 20 | 40 | 90 | 340 |
| | | | 20 | 18 | 12 | 22 | 70 | 210 |
| | | 2 | 15 | 16 | 40 | 110 | 260 | 550 |
| | | | 25 | 16 | 40 | 110 | 260 | 550 |
| | | | 30 | 16 | 18 | 40 | 125 | 290 |
| | | | 35 | 16 | 40 | 110 | 260 | 550 |
| | | | 40 | - | 36 | 90 | 230 | 460 |
| | | | 50 | - | 40 | 110 | 260 | 550 |
| | | | 60 | - | 20 | 40 | 90 | 340 |
| | | | 70 | - | 20 | 40 | 90 | 340 |
| | | | 80 | - | 36 | 90 | 230 | 460 |
| | | | 100 | - | 40 | 110 | 260 | 550 |
| 140 | - | 20 | 40 | 90 | 340 | | | |
| 200 | - | 12 | 22 | 70 | 210 | | | |
| 急停扭矩/Emergency stop torque T_{2NOT} | Nm | 1,2 | 3~200 | 二倍额定输出力矩/Double rated output torque | | | | |
| 额定输入转速/Rated input speed n_{1N} | rpm | 1,2 | 3~200 | 4500 | 4000 | 3500 | 3500 | 3000 |
| 最大输入转速/Maximum input speed n_{1B} | rpm | 1,2 | 3~200 | 10000 | 8000 | 6000 | 6000 | 4500 |
| 标准背隙/Standard backlash $P2$ | arcmin | 1 | 3~20 | ≤26 | ≤16 | ≤16 | ≤16 | ≤16 |
| 扭转刚性/Torsional rigidity | Nm/arcmin | 1,2 | 3~200 | 0.65 | 1.8 | 4.7 | 11 | 35 |
| 容许径向力/Allowable radial force F_{2aB} | N | 1,2 | 3~200 | 165 | 240 | 400 | 1240 | 3700 |
| 容许轴向力/Allowable axial force F_{2aB} | N | 1,2 | 3~200 | 135 | 220 | 420 | 1000 | 3500 |
| 使用寿命/Lifespan | hr | 1,2 | 3~200 | 10000* | | | | |
| 效率/Efficiency | % | 1 | 3~20 | 94% | | | | |
| | | 2 | 25~200 | 91% | | | | |
| 重量/Weight | kg | 1 | 3~20 | 0.3 | 0.85 | 2 | 6 | 11 |
| | | 2 | 25~200 | 0.4 | 0.9 | 2.3 | 7.5 | 13 |
| 使用温度/Working temperature | °C | 1,2 | 3~200 | (-10° C +90° C) | | | | |
| 润滑/Lubricating | | | | 合成润滑脂/Synthetic lubricating grease | | | | |
| 防护等级/IP Grade | | 1,2 | 3~200 | IP54 | | | | |
| 安装方向/Installation direction | | 1,2 | 3~200 | 任意方向/In any direction | | | | |
| 噪音值($n_1=3000$, 无负载) Noise level ($n_1=3000$, off load) | dB(A) | 1,2 | 3~200 | ≤65 | ≤65 | ≤68 | ≤73 | ≤75 |

● 减速机转动惯量 /Rotational inertia

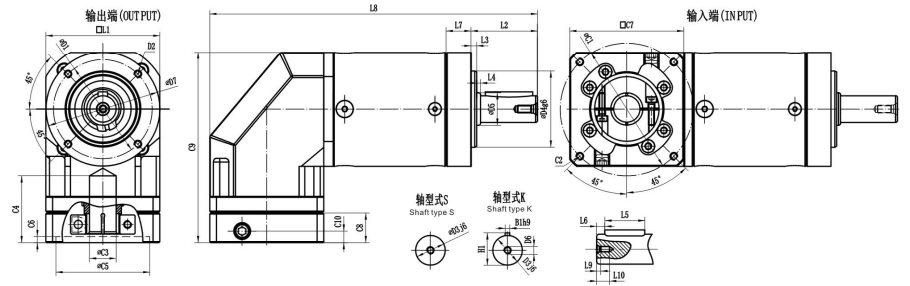
| 规格 Specification | 单位 Unit | 节数 Stage | 减速比 Ratio | WPLR042 | WPLR060 | WPLR080 | WPLR120 | WPLR160 |
|---------------------------------|--------------------|-------------|--------------|---------|---------|---------|---------|---------|
| 转动惯量J1 Rotational inertia J1 | kg.cm ² | 1 | 3~10 | 0.03 | 0.135 | 0.75 | 2.5 | 5.8 |
| | | | 12、14 | 0.03 | 0.09 | 0.45 | 1.3 | 1.9 |
| | | | 20 | 0.03 | 0.09 | 0.39 | 1.2 | 2.73 |
| | | 2 | 15 | 0.015 | 0.09 | 0.45 | 2.4 | 3.3 |
| | | | 25~100 | 0.01 | 0.035 | 0.2 | 1.4 | 2.3 |
| | | | 120~200 | 0.005 | 0.035 | 0.18 | 1.3 | 2.1 |

DIMENSION
SINGLE SECTION



● 尺寸 (单节, 减速比 i=3~20) Dimension(single stage, Ratio i=3~20)

| 尺寸/Dimension | WPLR042 | WPLR060 | WPLR080 | WPLR120 | WPLR160 |
|--------------|---------|---------|---------|---------|---------|
| D1 | - | 52 | 70 | 100 | 145 |
| D2 | - | M5 | M6 | M10 | M12 |
| D3 | - | 14 | 20 | 25 | 40 |
| D4 | - | 40 | 60 | 80 | 130 |
| D5 | - | 17 | 25 | 35 | 55 |
| D6 | - | M5 | M6 | M10 | M12 |
| D7 | - | 60 | 80 | 115 | 162 |
| L1 | - | 60 | 80 | 115 | 142 |
| L2 | - | 35 | 40 | 55 | 87 |
| L3 | - | 3 | 3 | 4 | 5 |
| L4 | - | 2 | 1 | 1 | 2 |
| L5 | - | 25 | 25 | 40 | 65 |
| L6 | - | 2.5 | 5 | 5 | 5 |
| L7 | - | 13 | 21.5 | 40.5 | 32.5 |
| L8 | - | 153.5 | 204 | 288 | 340.5 |
| L9 | - | 4.8 | 5 | 7.5 | 9.5 |
| L10 | - | 12 | 18 | 23 | 25 |
| C1 | - | 70 | 90 | 145 | 200 |
| C2 | - | M4 | M5 | M8 | M12 |
| C3 | - | 6-14 | 14-19 | 16-24 | 22-35 |
| C4 | - | 35 | 54 | 81 | 81 |
| C5 | - | 50 | 70 | 110 | 114.3 |
| C6 | - | 3.5 | 6 | 14 | 19 |
| C7 | - | 60 | 80 | 130 | 180 |
| C8 | - | 16 | 30 | 45.5 | 57.5 |
| C9 | - | 100 | 137 | 192 | 246.5 |
| C10 | - | 9.5 | 14.5 | 27 | 32 |
| B1h9 | - | 5 | 6 | 8 | 12 |
| H1 | - | 16 | 22.5 | 28 | 43 |



DIMENSION
DOUBLE SECTION

● 尺寸 (双节, 减速比 i=15~200) Dimension(double stage, Ratio i=15~200)

| 尺寸/Dimension | WPLR042 | WPLR060 | WPLR080 | WPLR120 | WPLR160 |
|--------------|---------|---------|---------|---------|---------|
| D1 | - | 52 | 70 | 100 | 145 |
| D2 | - | M5 | M6 | M10 | M12 |
| D3 | - | 14 | 20 | 25 | 40 |
| D4 | - | 40 | 60 | 80 | 130 |
| D5 | - | 17 | 25 | 35 | 55 |
| D6 | - | M5 | M6 | M10 | M12 |
| D7 | - | 60 | 80 | 115 | 162 |
| L1 | - | 60 | 80 | 115 | 142 |
| L2 | - | 35 | 40 | 55 | 87 |
| L3 | - | 3 | 3 | 4 | 5 |
| L4 | - | 2 | 1 | 1 | 2 |
| L5 | - | 25 | 25 | 40 | 65 |
| L6 | - | 2.5 | 5 | 5 | 5 |
| L7 | - | 13 | 21.5 | 40.5 | 32.5 |
| L8 | - | 172.5 | 228.5 | 288 | 388.5 |
| L9 | - | 4.8 | 5 | 7.5 | 9.5 |
| L10 | - | 12 | 18 | 23 | 25 |
| C1 | - | 70 | 90 | 145 | 200 |
| C2 | - | M4 | M5 | M8 | M12 |
| C3 | - | 6-14 | 14-19 | 16-24 | 22-35 |
| C4 | - | 35 | 54 | 81 | 81 |
| C5 | - | 50 | 70 | 110 | 114.3 |
| C6 | - | 3.5 | 6 | 14 | 19 |
| C7 | - | 60 | 80 | 130 | 180 |
| C8 | - | 16 | 30 | 45.5 | 57.5 |
| C9 | - | 100 | 137 | 192 | 246.5 |
| C10 | - | 9.5 | 14.5 | 27 | 32 |
| B1h9 | - | 5 | 6 | 8 | 12 |
| H1 | - | 16 | 22.5 | 28 | 43 |