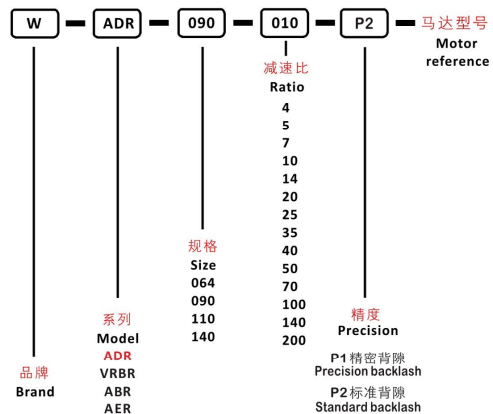




INDICATION FOR MODEL SELECTION

● 机种型号表示



GENERAL NOTICES

● 订货须知

- 机种、型号、扭矩
- 减速比或出力轴转速
- 工况及连接方式
- 数量及安装的机械名称
- 入力方式和入力转速
- 马达厂牌型号或法兰及马达轴尺寸
- Type, model and torque
- Ratio or output speed
- Working conditions and connection methods
- Quantity and installed machine name
- Input mode and input speed
- Motor brand model or flange and motor shaft size

PLANETARY GEARBOX

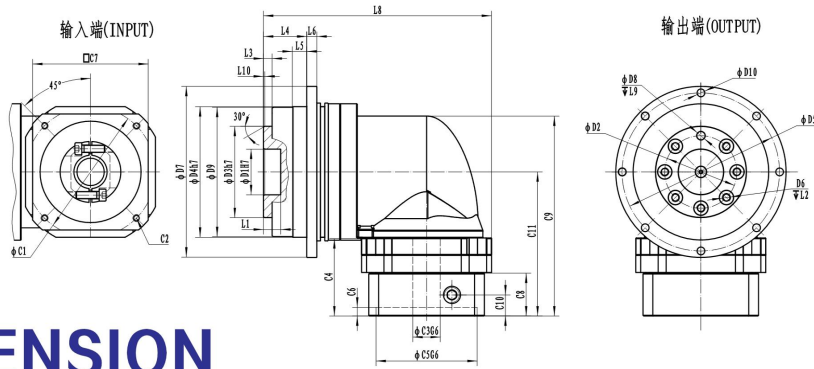
● 减速机性能资料/Performance

规格 Specification	单位 Unit	节数 Stage	减速比 Ratio	WADR064	WADR090	WADR110	WADR140
额定输出扭矩 Rated output torque $T_{2N}$	Nm	1	4	48	130	270	560
			5	60	160	330	650
			6	50	140	300	550
			7	50	140	300	550
			8	48	130	270	560
			10	60	160	330	650
			14	50	140	300	550
		2	20	40	100	230	450
			25	60	160	330	650
			35	50	140	300	550
			40	48	130	270	560
			50	60	160	330	650
			70	50	140	300	550
			100	60	160	330	650
急停扭矩 /Emergency stop torque $T_{2NOT}$	Nm	1,2	三倍额定输出力矩 /Triple rated output torque				
			140	50	140	300	550
额定输入转速 /Rated input speed $n_{1N}$	rpm	1,2	4~200	5000	4000	4000	3000
最大输入转速 /Maximum input speed $n_{1B}$	rpm	1,2	4~200	10000	8000	8000	6000
精密背隙 /Precision backlash $P1^*$	arcmin	1	4~20	≤8	≤8	≤8	≤8
		2	25~200	≤10	≤10	≤10	≤10
标准背隙 /Standard backlash $P2^*$	arcmin	1	4~20	≤10	≤10	≤10	≤10
		2	25~200	≤13	≤13	≤13	≤13
扭转刚性 /Torsional rigidity	Nm/arcmin	1,2	4~200	13	31	82	151
最大弯曲力矩 Maximum bending torque $M_{2KB}$	Nm	1,2	4~200	125	235	430	1300
容许轴向力 /Allowable axial force $F_{2aB}$	N	1,2	4~200	1050	2850	2990	10590
使用寿命 /Lifespan	hr	1,2	4~200	20000*			
效率 /Efficiency	%	1	4~20	≥95%			
		2	25~200	≥92%			
重量 /Weight	kg	1	4~20	2.1	5.9	10.5	21.9
		2	25~200	1.9	4.5	9.8	20.1
使用温度 /Working temperature	°C	1,2	4~200	(-10° C +90° C)			
润滑 /Lubricating				合成润滑油 /Synthetic lubricating grease			
防护等级 /IP Grade		1,2	4~200	IP65			
安装方向 /Installation direction		1,2	4~200	任意方向 /In any direction			
噪音值 (n1=3000rpm, 无负载) Noise level (n1=3000rpm, off load)	dB(A)	1,2	4~200	≤63	≤65	≤68	≤70

(注：“\*”的精度需与工程师确认/Need confirm with our engineer for those precision data with“\*”)

● 减速机转动惯量 /Rotational inertia

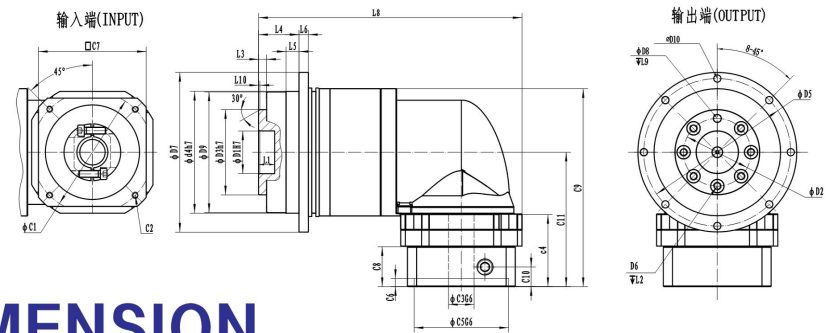
规格 Specification	单位 Unit	节数 Stage	减速比 Ratio	WADR064	WADR090	WADR110	WADR140
转动惯量 J1 Rotational inertia J1	kg.cm <sup>2</sup>	1	4~10	0.35	2.25	6.84	23.4
			14	0.07	1.87	6.25	21.8
		2	20	0.07	1.87	6.25	21.8
			25~100	0.09	0.35	2.25	6.84
			140~200	-	0.31	1.87	6.25



## DIMENSION SINGLE SECTION

- 尺寸 (单节, 减速比  $i=4\sim 20$ ) / Dimension (single stage, Ratio  $i=4\sim 20$ )

尺寸 / Dimension	WADR064	WADR090	WADR110	WADR140
D1 <sub>H7</sub>	20	31.5	40	50
D2	31.5	50	63	80
D3 <sub>H7</sub>	40	63	80	100
D4 <sub>H7</sub>	64	90	110	140
D5	79	109	135	168
D6	7×M5	7×M6	11×M6	11×M8
D7	86	118	145	179
D8 <sub>H7</sub>	5	6	6	8
D9	63.2	89.2	109.2	139.2
D10	8×4.5	8×5.5	8×5.5	12×6.6
L1	8	12	12	12
L2	9	12	15	17
L3	3	6	6	6
L4	19.5	30	29	38
L5	7	10	10	14.6
L6	4	7	8	10
L8	114.5	158	190	248
L9	6	7	7	7
L10	0.5	1	1	1
C1	70	90	145	200
C2	4×M4	4×M5	4×M8	4×M12
C3 <sub>G6</sub>	≅14	≅19/≅24	≅24	≅35/≅42
C4	35	54	81	81
C5 <sub>G6</sub>	50	70	110	114.3
C6	3.5	6	14	19
C7	60	80	130	180
C8	24.2	29.5	45	57
C9	104.5	147	194.5	250.5
C10	9.5	14.5	27	32
C11	70	100	132	175.5



## DIMENSION DOUBLE SECTION

- 尺寸 (双节, 减速比  $i=25\sim 200$ ) / Dimension (double stage, Ratio  $i=25\sim 200$ )

尺寸 / Dimension	WADR064	WADR090	WADR110	WADR140
D1 <sub>H7</sub>	20	31.5	40	50
D2	31.5	50	63	80
D3 <sub>H7</sub>	40	63	80	100
D4 <sub>H7</sub>	64	90	110	140
D5	79	109	135	168
D6	7×M5	7×M6	11×M6	11×M8
D7	86	118	145	179
D8 <sub>H7</sub>	5	6	6	8
D9	63.2	89.2	109.2	139.2
D10	8×4.5	8×5.5	8×5.5	12×6.6
L1	8	12	12	12
L2	9	12	15	17
L3	3	6	6	6
L4	19.5	30	29	38
L5	7	10	10	14.6
L6	4	7	8	10
L8	146.5	195.5	219.5	325.5
L9	6	7	7	7
L10	0.5	1	1	1
C1	70	90	145	200
C2	4×M4	4×M5	4×M8	4×M12
C3 <sub>G6</sub>	≅14	≅19/≅24	≅24	≅35/≅42
C4	35	54	67	81
C5 <sub>G6</sub>	50	70	110	114.3
C6	3.5	6	11.5	19
C7	60	80	130	180
C8	24.2	29.5	42.5	57
C9	104.5	147	160	250.5
C10	9.5	14.5	27	32
C11	70	100	113	175.5